



Partner rather than Supplier



Lindley is part of a Group established in 1930 comprising three operational companies :

- **LINDLEY – Marinas, Navais and Oceanography**
(4m€, 14 employees)
- **ALMOVI – Cargo Handling and Port Equipment**
(14m€, 25 employees)
- **ALMARIN – Port Equipment and Navais**
(2m€, 5 employees)

www.lindley.pt



Headquarters in Alcoitão with an area of 2,500sqm of offices and workshop

Presence in Portugal (Lisboa, Porto, Açores, Madeira), Spain (Barcelona), Portuguese Speaking Africa (Angola, Mozambique, Guiné-Bissau, Cape Verde, S. Tomé e Príncipe) and Brazil

www.lindley.pt



Activity of the company is focused on

- Engineering and design
- Fabrication under license
- Subcontracting
- Project management
- Installation, maintenance and after-sales

www.lindley.pt



Customers

- Project Developers and Private Entities
- Contractors
- Ports and Harbours, Maritime Authorities
- Municipalities
- Consultants and Designers
- Hydrographic and Oceanographic Institutes
- Marinas and Leisure Harbours

www.lindley.pt

Equipments and Services

- Floating pontoons and port equipment (fenders, bollards, pollution control)
- Navigation lights, buoys and data acquisition systems
- Installation, service and maintenance

Design, fabrication and installation of turn-key projects



www.lindley.pt

Design, fabrication and installation of buoys and special projects



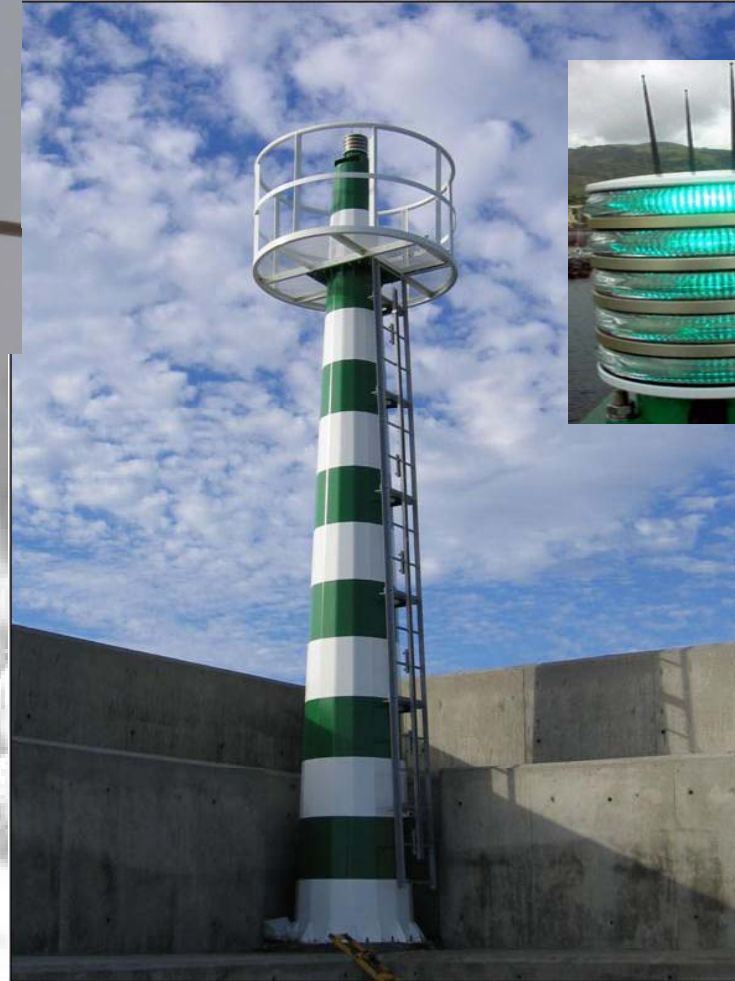
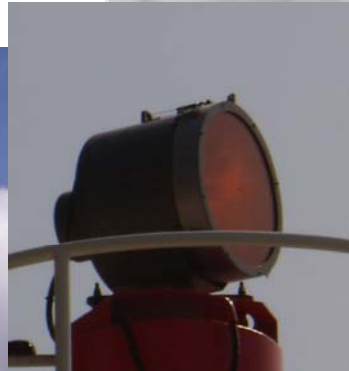
www.lindley.pt

Design, fabrication and installation of buoys for turn key projects



www.lindley.pt

Design, fabrication and installation of fixed structures for jetties and breakwaters



www.lindley.pt

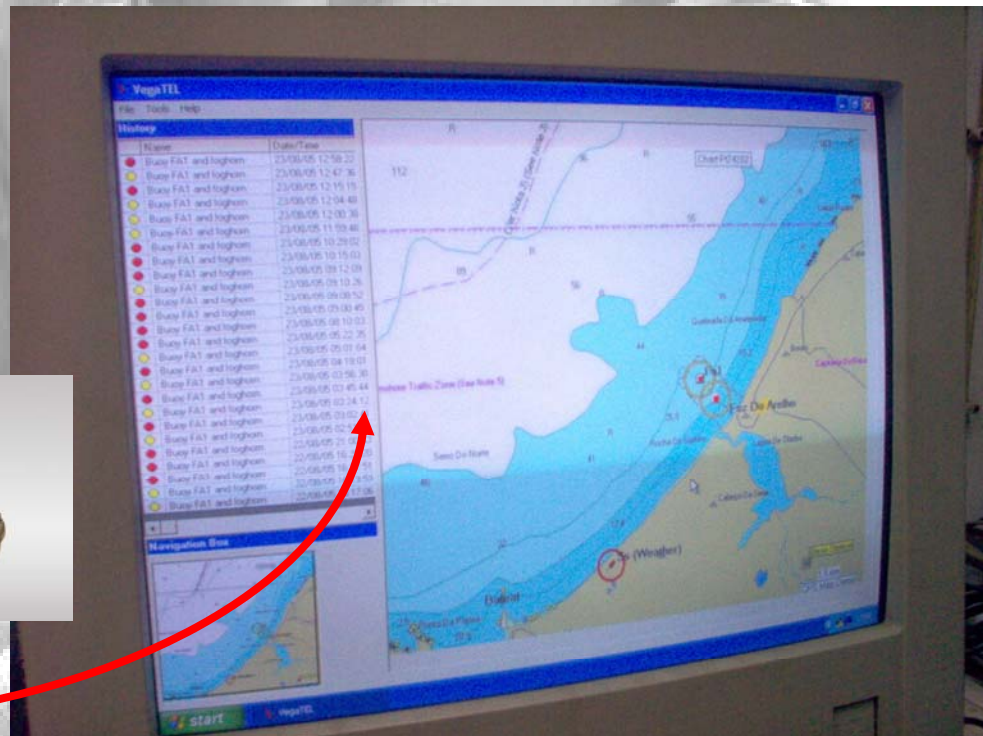
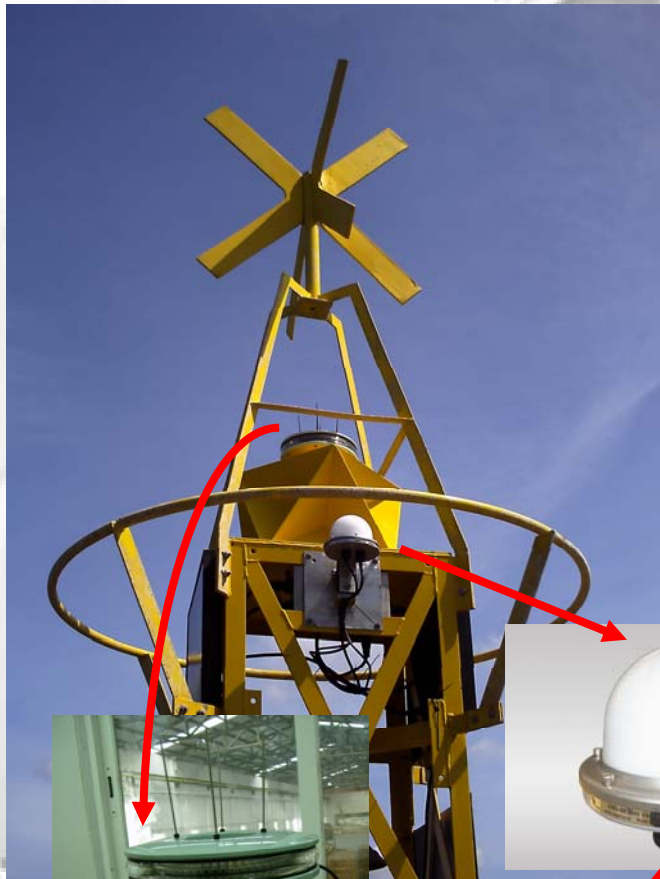


Design and installation of solutions for special applications



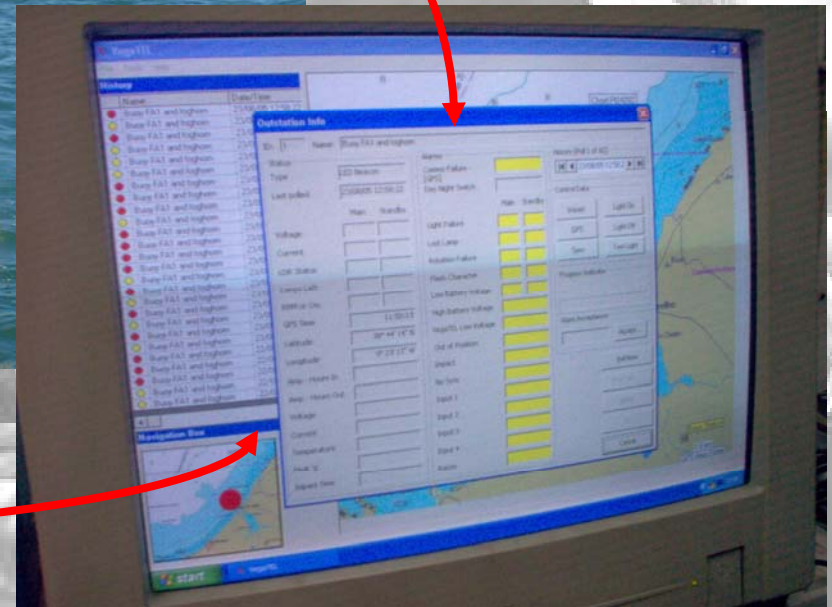
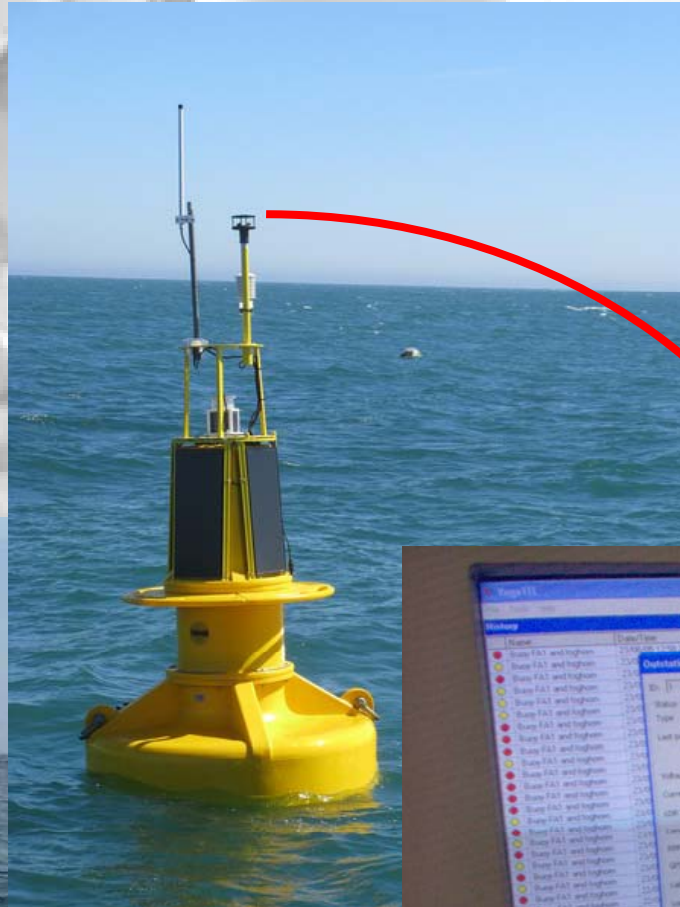
www.lindley.pt

Real time monitoring and telemetry

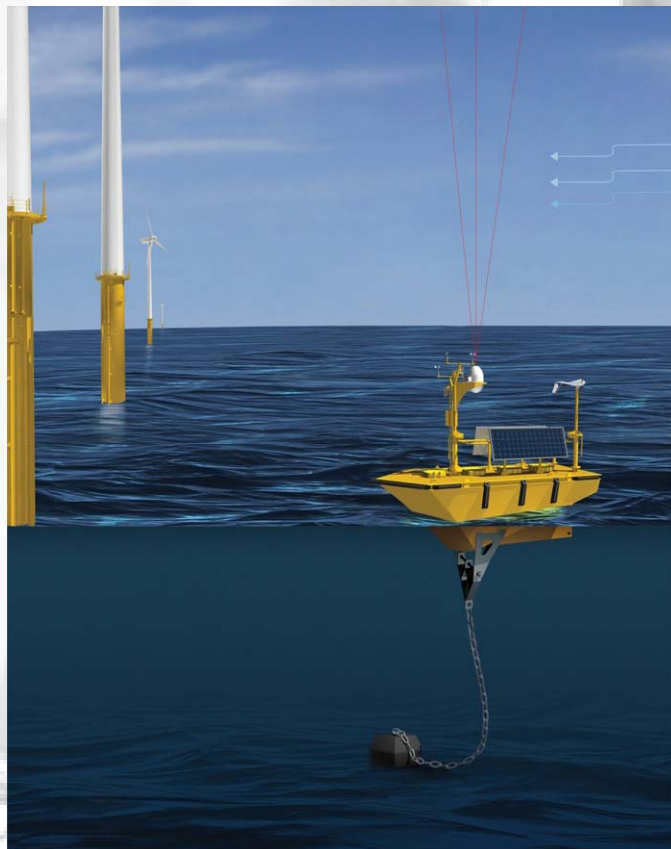


www.lindley.pt

Real time data acquisition via Inmarsat, GSM or VHF

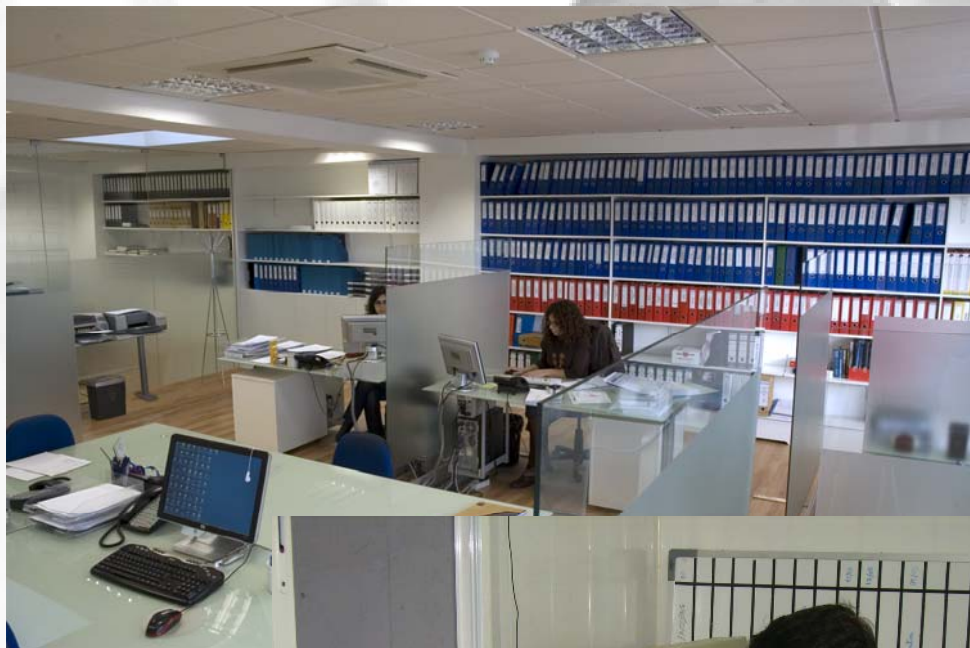


Data acquisition (wave, current, wind incorporating LIDAR systems)



www.lindley.pt

Engineering department for design and specification of solutions



www.lindley.pt

Workshop and warehouse fully equipped



www.lindley.pt

Experienced operations crew

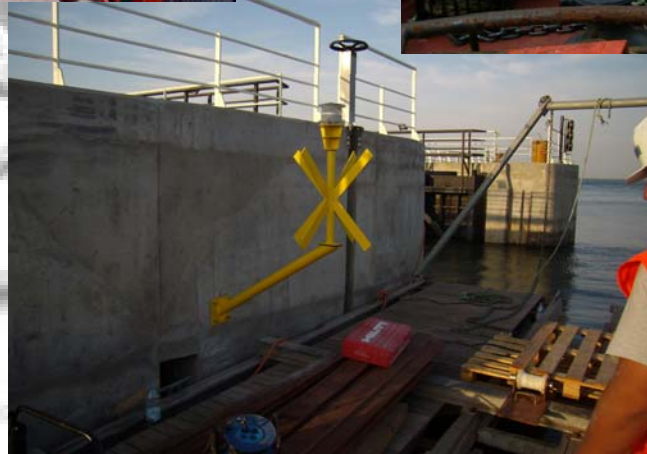


www.lindley.pt

Light barge equipped with winch and RIBs equipped with DGPS



Heavy barges subcontract and project management capability



www.lindley.pt



Partner rather than Supplier ?

Up to you to decide...

Thank you!

www.lindley.pt